



A 1930's HISTORICAL GEM SITGES

3.200.000 €

Reference AH00216

Built area: 585 m² (6.297 sqft)

Living area: 468 m² (5.037 sqft)

Bedrooms: 8

Bathrooms: 2+1

Plot area: 1,086 m² (11.689 sqft)

Private pool

Barbecue area

Independent apartment



Description

Nestled in the picturesque town of Sitges, this exquisite residence, dating back to 1934, offers a timeless blend of historic charm and a great location towards the sea and the center of town. The house boasts the distinctive features of the period, showcasing the elegant lines and timeless design characteristic of 1930s architecture. Set on a sprawling plot of 1,085 square meters, the property boasts an impressive 531 square meters of useful area.

hola@applehouses.es +34 619 700 598 +34 610 221 417



A 1930's HISTORICAL GEM

SITGES



As you approach the grand entrance, the allure of this majestic house becomes apparent. The architectural finesse of the era is evident in every detail, from the ornate facade to the ceiling heights, large rooms and many other details

Upon entering the house through the main door and its porch, the first floor welcomes you with a spacious and elegant entrance hall. The living room and dining room exude warmth, adorned with classical elements. Adjacent to this space there is a bedroom and a kitchen divided into two spaces plus a guest toilet. From the kitchen there is access to a large basement and also to the first floor via a secondary service staircase.

There are various doors that access to the exterior terraces, the outdoor space offers a perfect setting for entertaining guests or enjoying serene moments with family. BBQ area, a doll's house and a garage or storage room plus a small 2 bedroom apartment independent from the house.



A 1930's HISTORICAL GEM

SITGES



Ascending to the second floor, there are three spacious bedrooms sharing a bathroom, and a the master bedroom with walking closet, large bathroom en suite and access to a private terrace.

The journey to the top floor reveals an additional four bedrooms, accompanied by a conveniently located half bathroom to be completed.

The charm of the 1930s emanates through each corner, inviting you to imagine the possibilities that lie within these storied walls. Whether you choose to preserve the vintage aesthetics or embark on a journey of tasteful modernization, this house is a treasure trove of potential.



A 1930's HISTORICAL GEM

SITGES



Location description

Sitges is a small town located about 40 kilometers southwest of Barcelona and very well connected to the Airport.El Prat. It is internationally recognized for its Film Festival and Carnival. It is located in a beautiful enclave between the Mediterranean Sea and the Natural Park of Garraf. Its economy is based on tourism and culture and it is also a famous place for its popular beaches, gastronomy, nightlife, golf courses, marinas and historical places. It has a population of approximately 28,000 inhabitants and an important international community.



A 1930's HISTORICAL GEM

SITGES





A 1930's HISTORICAL GEM

SITGES





A 1930's HISTORICAL GEM

SITGES





A 1930's HISTORICAL GEM

SITGES





A 1930's HISTORICAL GEM

SITGES





A 1930's HISTORICAL GEM

SITGES





A 1930's HISTORICAL GEM

SITGES





A 1930's HISTORICAL GEM

SITGES





A 1930's HISTORICAL GEM

SITGES





A 1930's HISTORICAL GEM

SITGES





A 1930's HISTORICAL GEM

SITGES





www.applehouses.es

A 1930's HISTORICAL GEM

SITGES





A 1930's HISTORICAL GEM

SITGES





A 1930's HISTORICAL GEM

SITGES





A 1930's HISTORICAL GEM

SITGES





A 1930's HISTORICAL GEM

SITGES



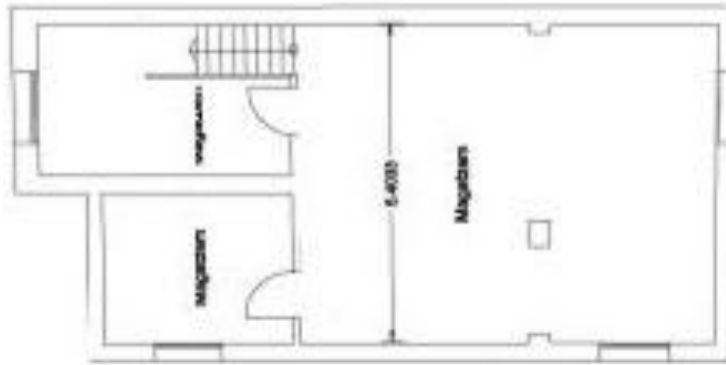


A 1930's HISTORICAL GEM

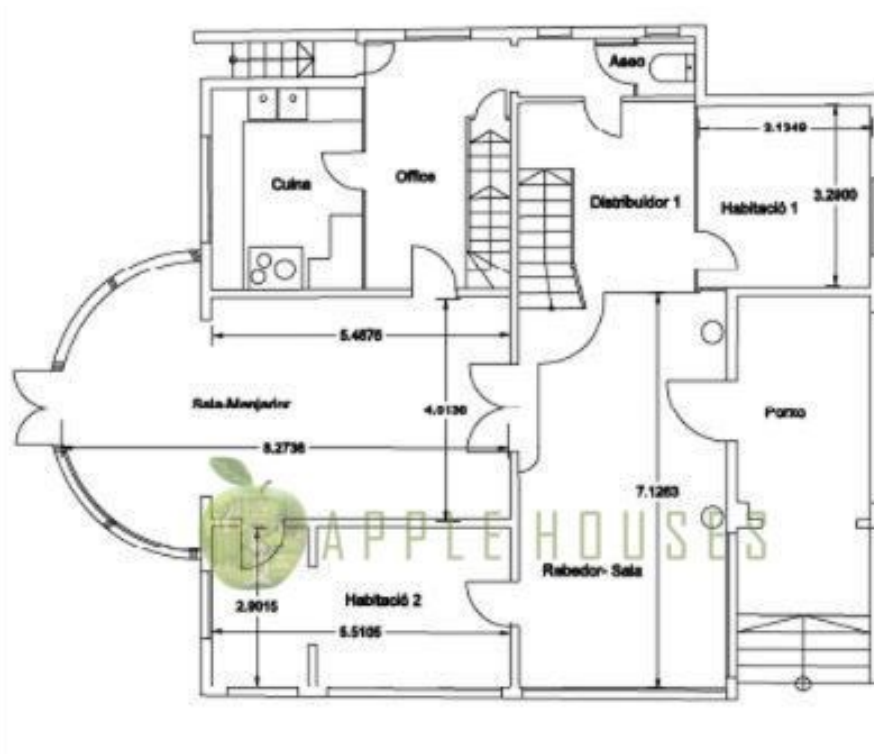
SITGES

FLOOR PLANS

Basement



Main floor



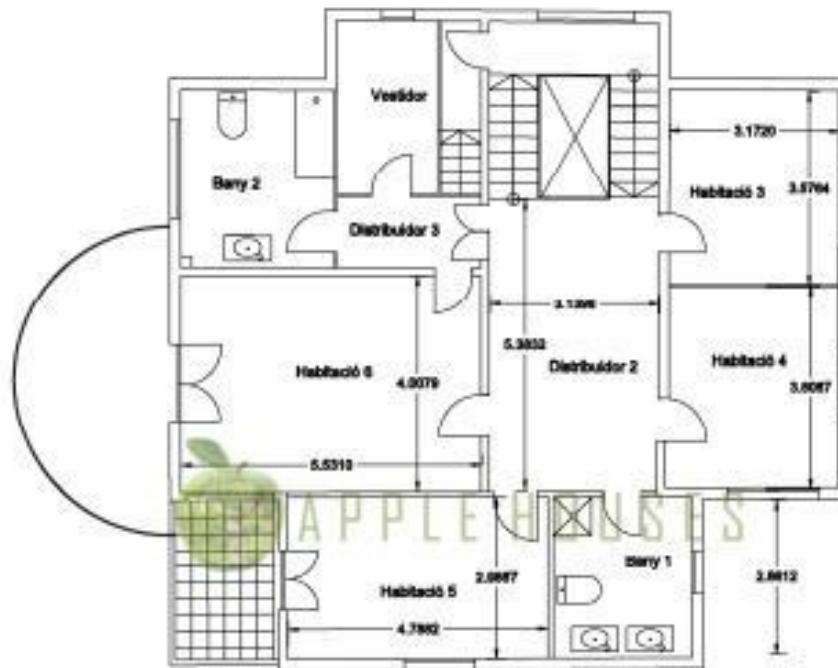
hola@applehouses.es +34 619 700 598 +34 610 221 417



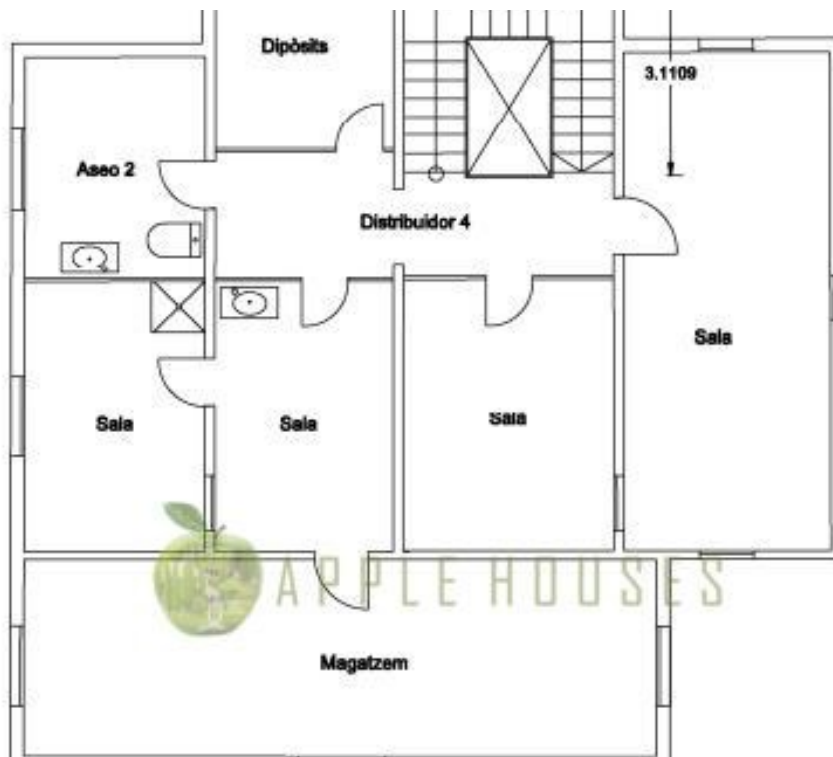
A 1930's HISTORICAL GEM

SITGES

First floor



Top floor





A 1930's HISTORICAL GEM

SITGES

Energy information

